

CHOOSE YOUR LEVEL OF COMMITMENT

A minimum contribution of 4.16% per subscription is required (which equals a discount of half a month).

The STM matches your discount, up to 10%.

Your employees therefore get a minimum of 1 month of free public transit.

SUBSCRIBE
TODAY

stm.info/en/opuscie



OPUS
& CIE

Employer contribution per month*	STM contribution per month*	Free month per employee
4.16% = \$3.60	\$3.60	1 month
10% = \$8.65	\$8.65	2.4 months
25% = \$21.63	\$8.65	4.2 months
50% = \$43.25	\$8.65	7.2 months

*Contribution per employee.
Based on 2019 fares

OPUS
& CIE

SOCIETY IN MOTION



OPUS & CIE PROGRAM

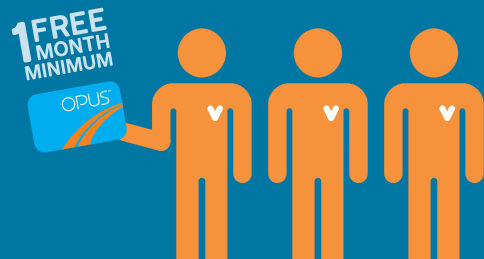
The OPUS & Cie program is for companies wanting to encourage their employees to use public transit.

AVANTAGES FOR YOU

Provincial income tax savings of up to 200%.

Competitive edge when it comes to recruiting potential candidates and retaining employees.

Contribution from the STM to your employees' annual subscriptions.



ADVANTAGES FOR YOUR EMPLOYEES

A minimum of one month of free transit. A free registered OPUS card and fares fully guaranteed against loss or theft.

No more line-ups: monthly fares are loaded automatically.

Exclusive BIXI offer for OPUS & Cie subscribers.

Eligibility for Maestro status after 12 months of subscription. The Maestro status allows subscribers to bring a friend free of charge on the STM network on nights and weekends. Maestro OPUS card holders can also use their cards on the Réseau de transport de la Capitale network in Quebec City.

A FULL-SERVICE PROGRAM

Receive support from a representative for program implementation in collaboration with Voyagez futé.

Manage subscriptions easily with access to a simple web platform.

Benefit from communication and promotional tools to encourage your employees to use the program.

ELIGIBILITY CRITERIA

Minimum commitment of a 12-month period.

Minimum of 10 participating employees per company or organization.
