



# Public consultation on the Northwest Attachment Centre (NAC) Project

November 2, 2020

# Consultation Process

- Objective: To insure an open dialogue with local residents with regards to the NAC's construction and operations
- Due to the public health situation surrounding COVID-19, the consultation will take place entirely online, in three steps
  - Project information session – November 2, 2020 (*Teams Live Events*)
  - Question-answering session – November 10, 2020 (*Teams Live Events*)
  - Public input session – November 24, 2020 (*Teams*, by appointment)



# Project Context



# What is an Attachment Centre?

- An infrastructure that provides the space necessary to park work vehicles used to perform regular metro network maintenance and renovations outside of the network's operation hours
- There are currently 3 attachment centres across the Montreal metro network
  - Youville Attachment Centre
  - Viau Attachment Centre
  - Duvernay Attachment Centre
- The Viau Attachment Centre is undergoing an expansion that will double its current capacity

# Why a New Attachment Centre?

- The new attachment centre is required in order to increase the amount of maintenance work that can be done simultaneously in the metro network
- The extension of the Blue line reaffirms this requirement
- The Snowdon area is an ideal location as it will allow to dispatch work vehicles both on the Blue line and the western portion of the Orange line

# Presentation of the NAC Project





# Project Scope

## ➤ Above ground

- Construction of a main building providing access to the underground for delivery trucks via truck lifts to facilitate merchandise handling. This facility will ensure truck circulation in a sheltered environment in order to minimize impacts for local residents
- Construction of an emergency exit for the evacuation of workers in case of emergency

## ➤ Underground

- Construction of an attachment centre connected to the Snowdon metro station, allowing parking for an additional 15 work vehicles



Electric Locotractor



Lorry



Platform

# Benefits of the New Attachment Centre

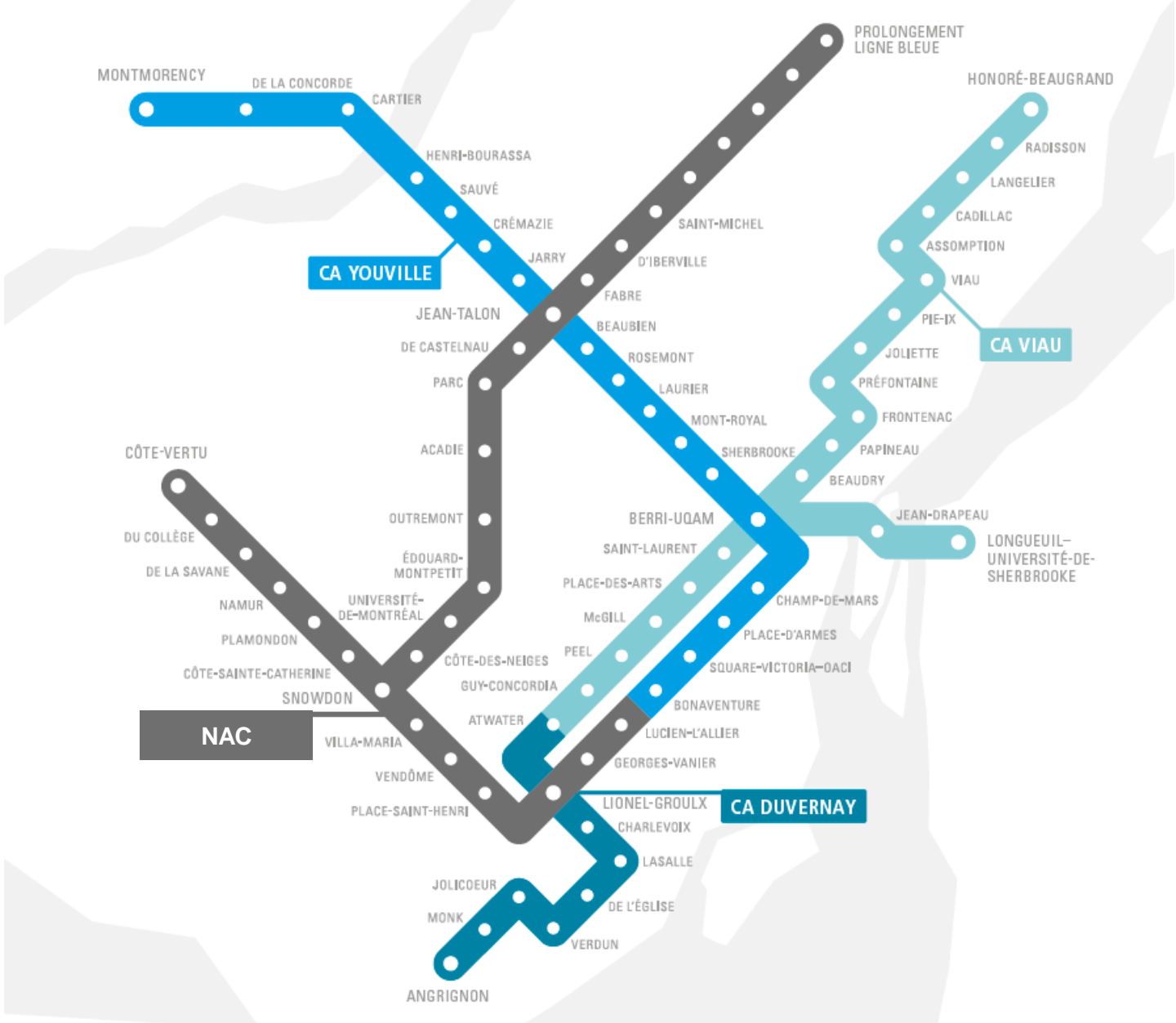
- Metro network maintenance is facilitated, which reduces the risk of service interruptions
  - Increases the effective working time for network maintenance and renovation
  - Enables an increase in the volume of maintenance work that can be carried out simultaneously on the network
- The chosen location allows to connect the attachment centre to the metro network without interrupting service during construction
- This investment will contribute to reducing the maintenance deficit of the STM's assets



# Attachement Centre Coverage Without NAC

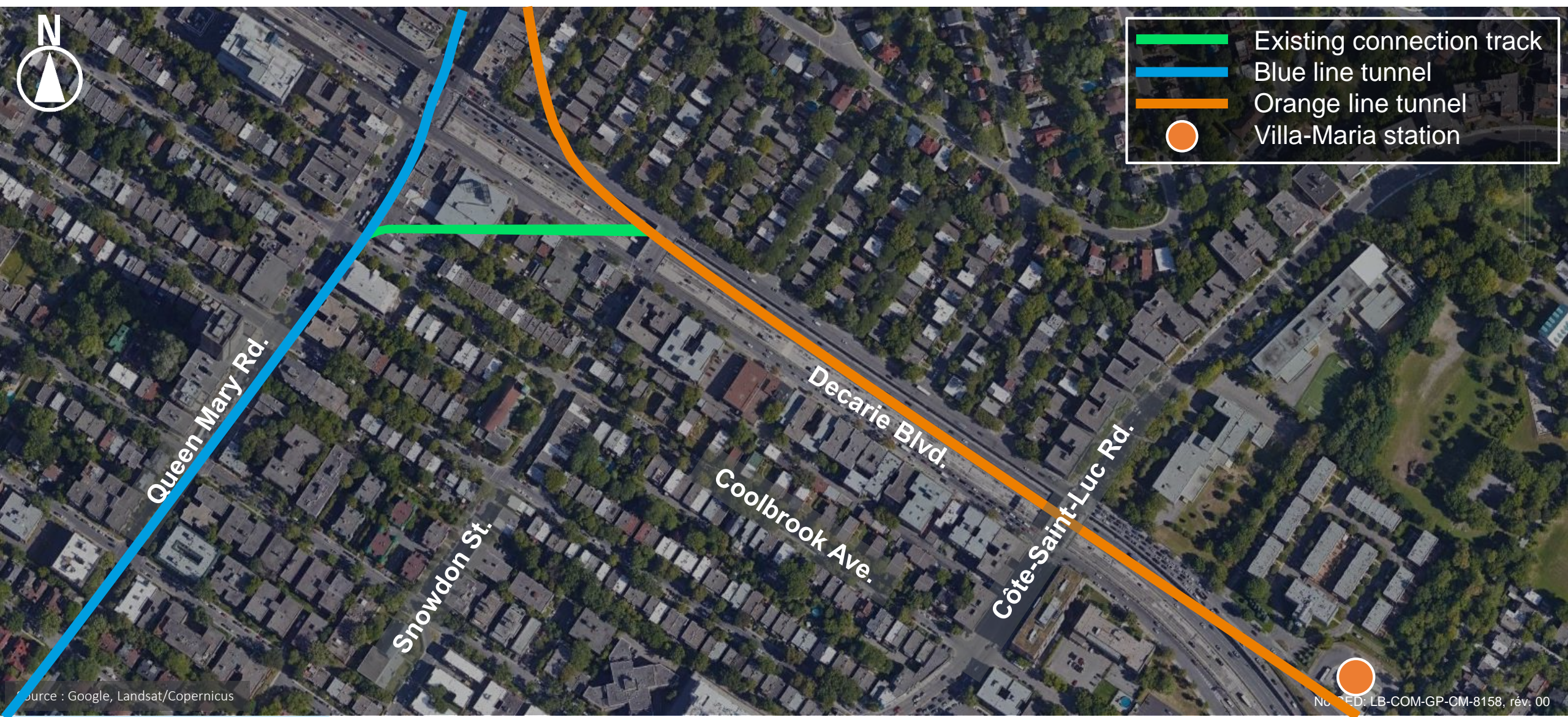


# Attachement Centre Coverage With NAC



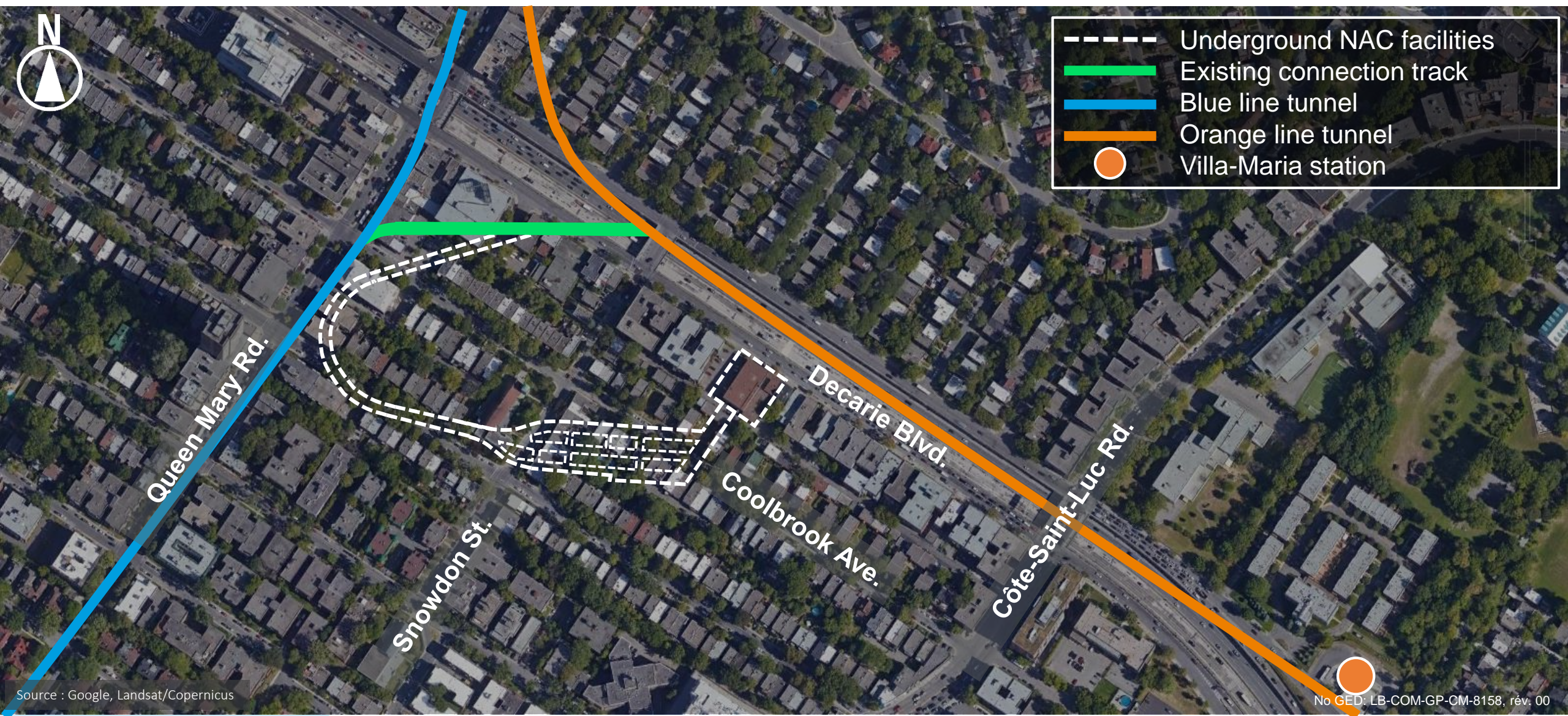


# Location of Current Underground Facilities



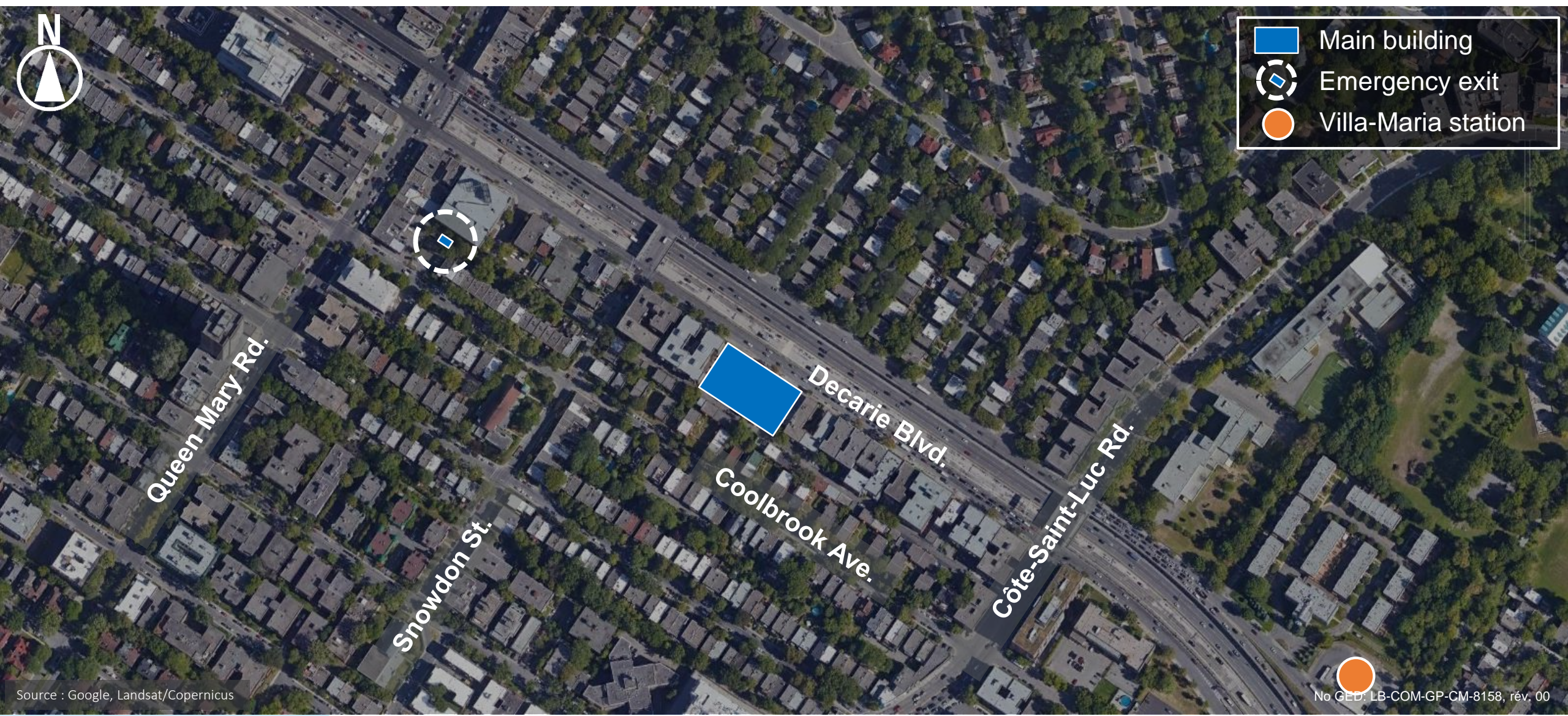


# Location of Future Underground Facilities





# Location of Projected Above Ground Installations





# Location of Projected Above Ground Installations

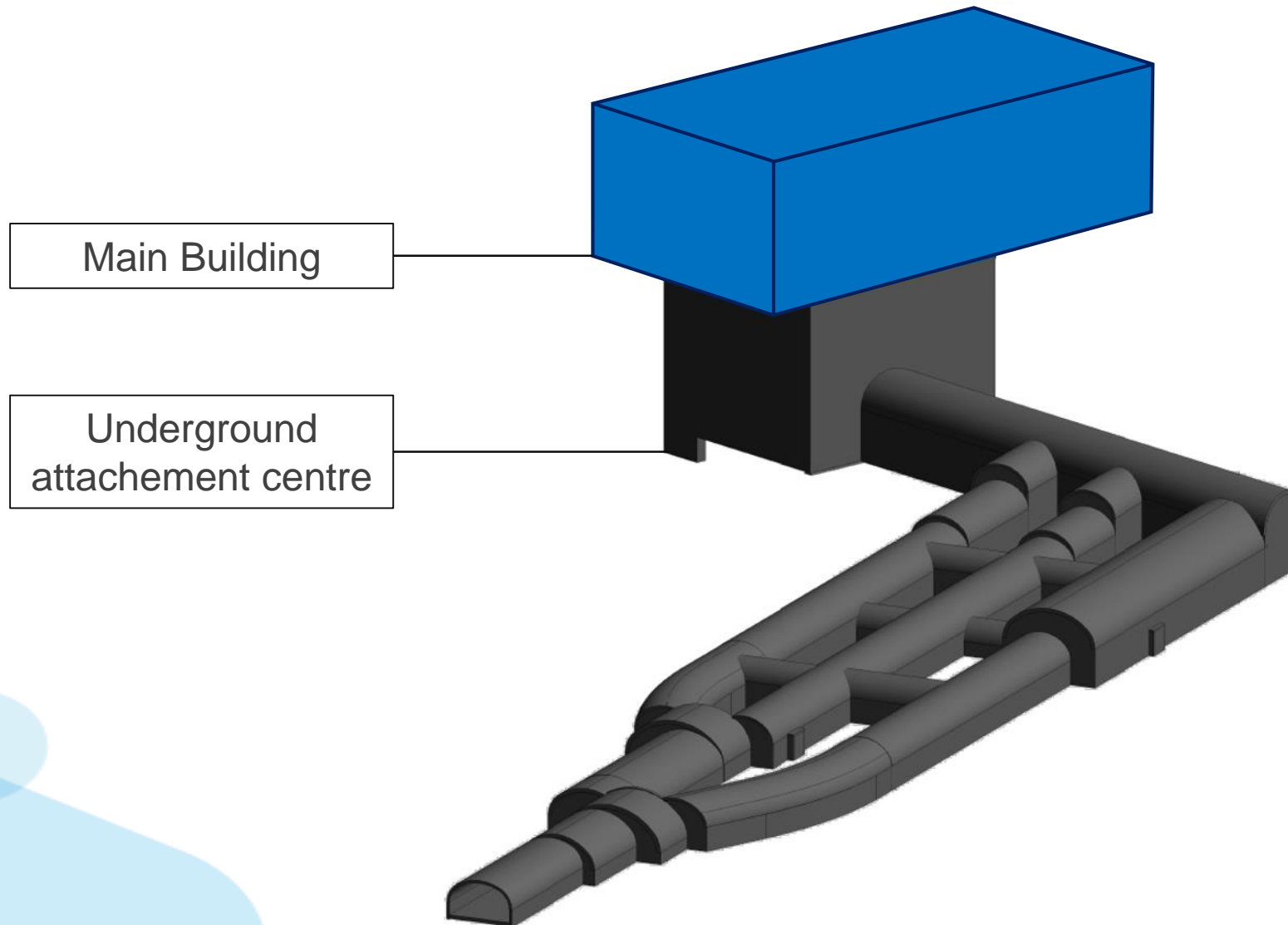
*Main site – Main building*





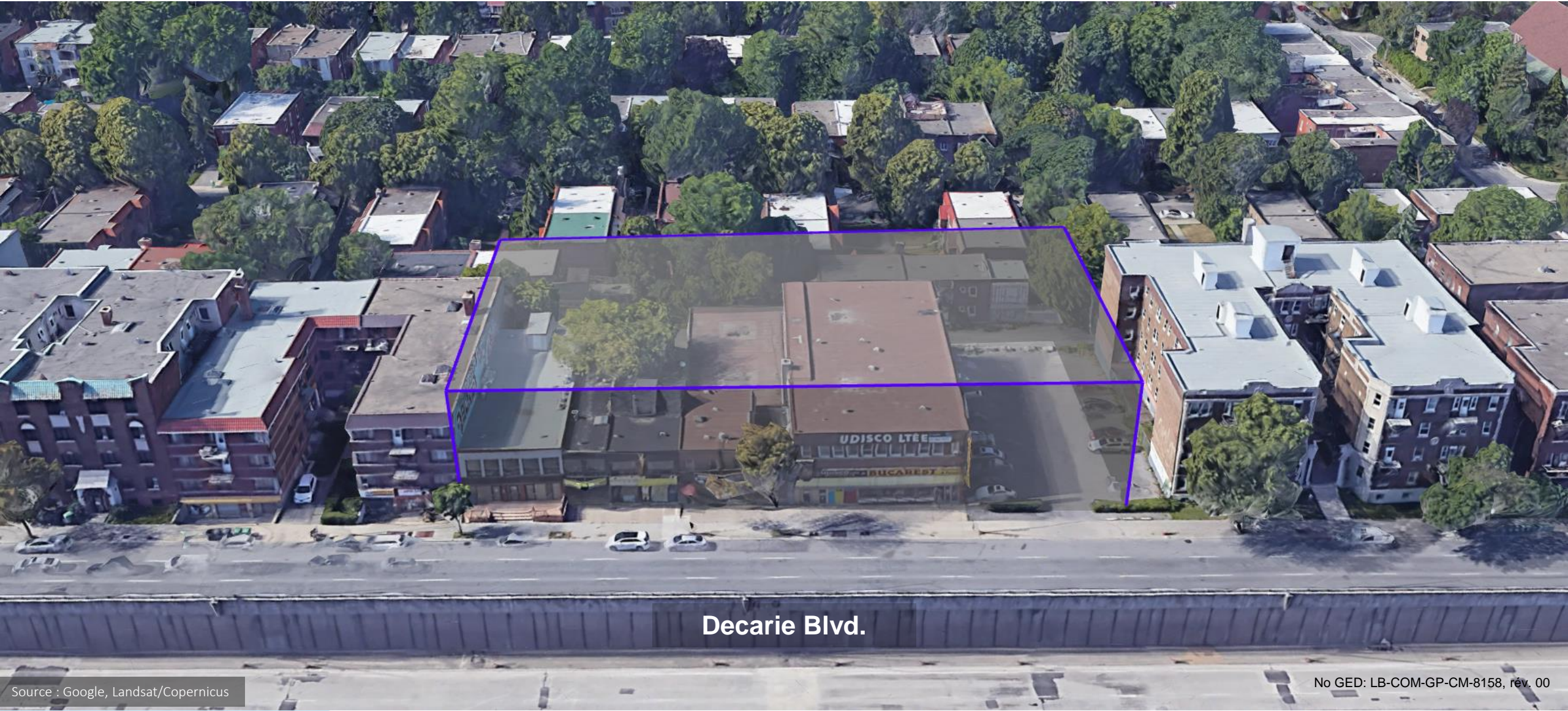
# Location of Projected Above Ground Installations

*Preliminary volumes – Main building and underground facilities*



# Location of Projected Above Ground Installations

*Preliminary volumes – Main building*

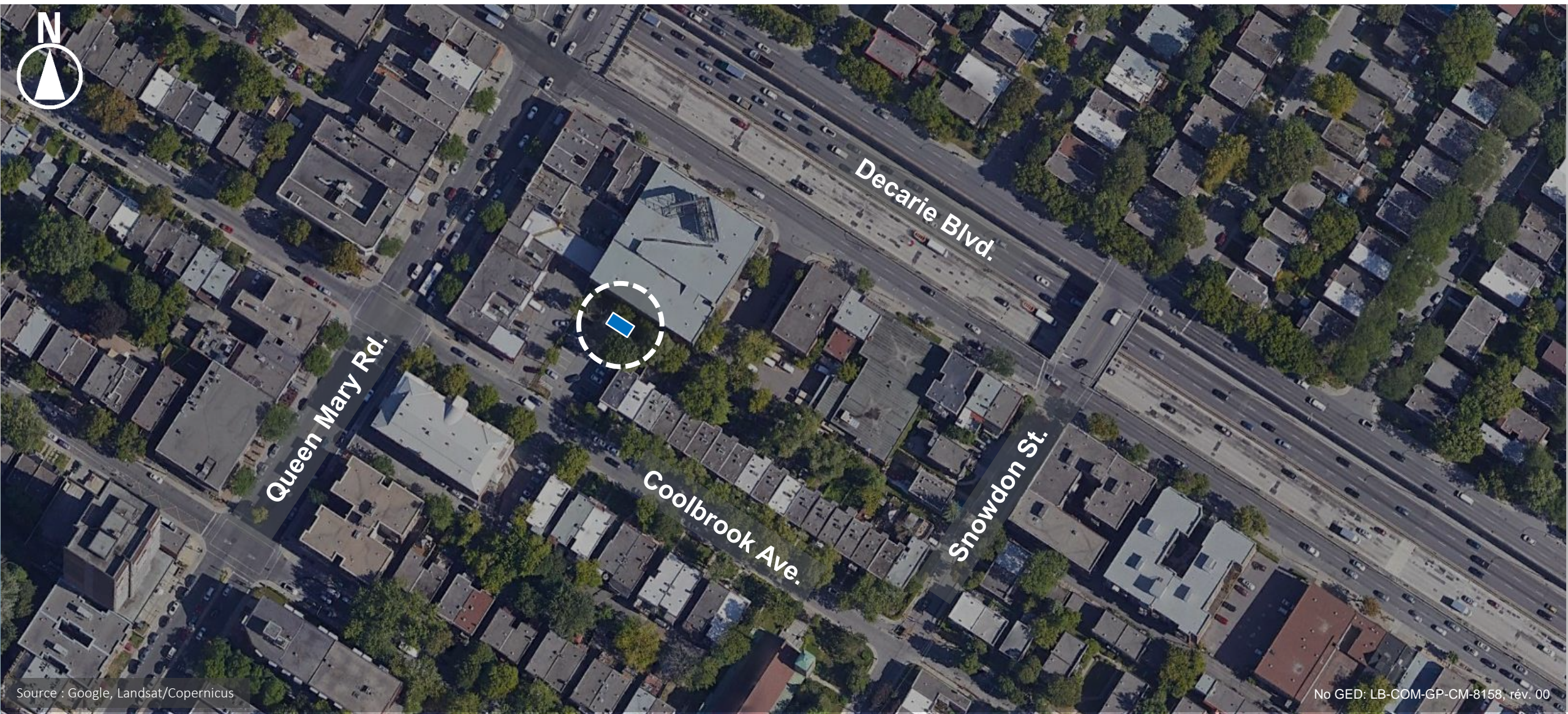


Decarie Blvd.



# Location of Projected Above Ground Installations

*Secondary site – Emergency exit*





# Architectural Guidelines

- Ensuring building integration to the urban context of the site
- Highlighting the positive aspects of an industrial architecture
- Minimizing impact on neighboring buildings
- Addressing differences between the context of Decarie Boulevard and the alleyway in a positive and integrated manner
- Maximizing green space around the building
- Improving pedestrian walkways around the building

# Key Project Milestones

## Studies and Project Planning 2019-2021

- Stakeholder consultation
- Feasibility studies
- Environmental surveys and analyses
- Land acquisition
- Preliminary and detailed designs
- Business case approval

## Project Construction 2021-2026

- Mitigation measures
- Demolition
- Excavation
- Concrete work
- Construction of all infrastructures

## Commissioning 2026

- Start of operations

# Preliminary Work Strategy



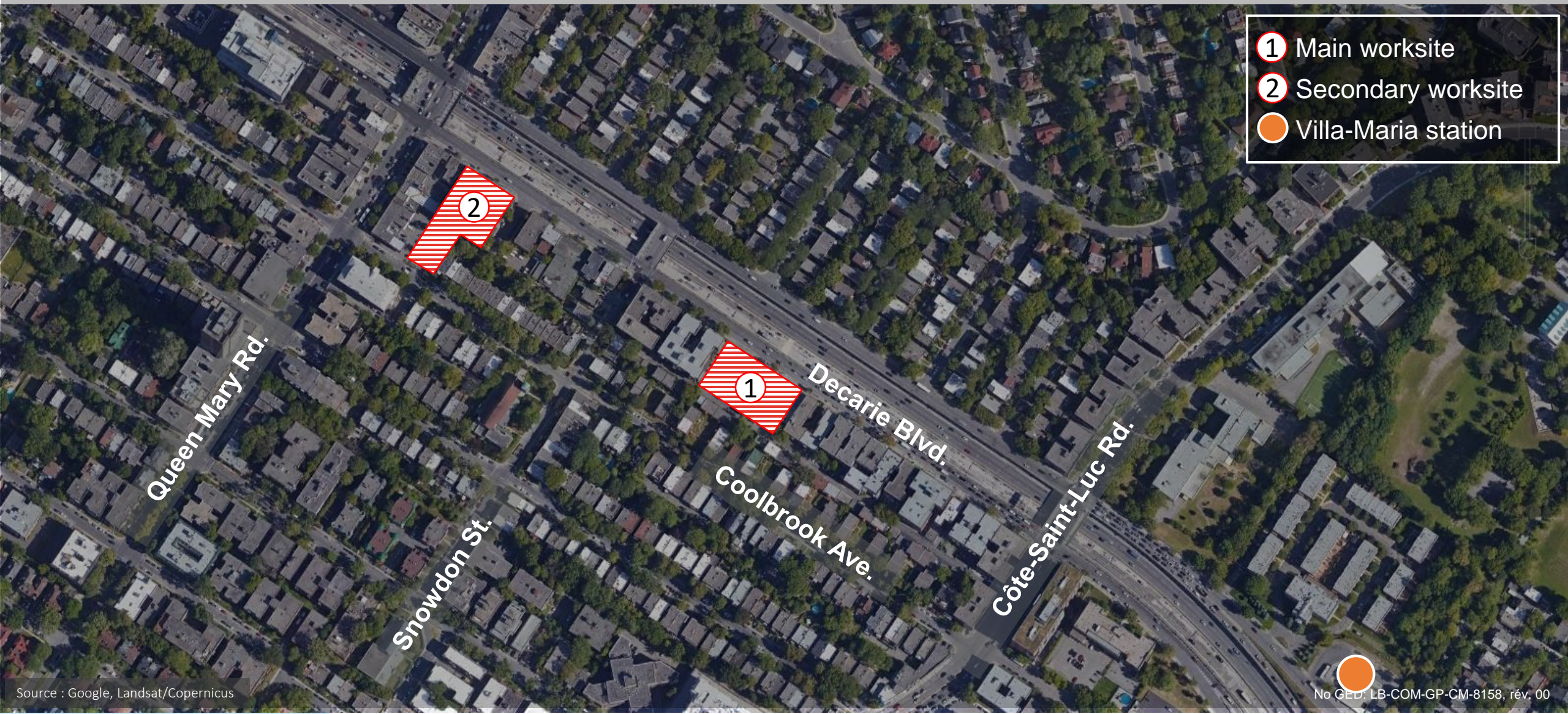


# Preliminary Excavation Strategy

- Existing buildings demolition to allow excavation, material extraction and construction
  - Main worksite – four buildings
  - Secondary worksite – one building
- Open-pit excavation required on both worksites to install access shafts for material extraction from the underground
- Implementation of several measures to mitigate the impacts of excavation
  - Impact study in progress
  - Collaboration with municipal services
  - Integration of strict requirements in contracts specifications to minimize impacts



# Identified Worksites





# Current Situation – Main Worksite





# Current Situation – Secondary Worksite



# Traffic Management

- Access to worksites from Decarie Boulevard only
- All streets will remain open during construction
- Traffic study results
  - Minimal impact on current traffic conditions on Decarie Boulevard and Expressway
  - During construction: maximum of 8 vehicles per hour at the highest traffic level
  - During operations: maximum of 7 vehicles per hour, during either the morning or the afternoon rush hours
- Pedestrian corridors and traffic controllers near worksites to ensure a secure environment
- Implementation of several measures to mitigate impacts on traffic
  - Noise and dust control (specialized equipment and procedures)
  - Strict requirements included in contracts specifications to minimize impacts
  - Collaboration with municipal services

# Communication Channels

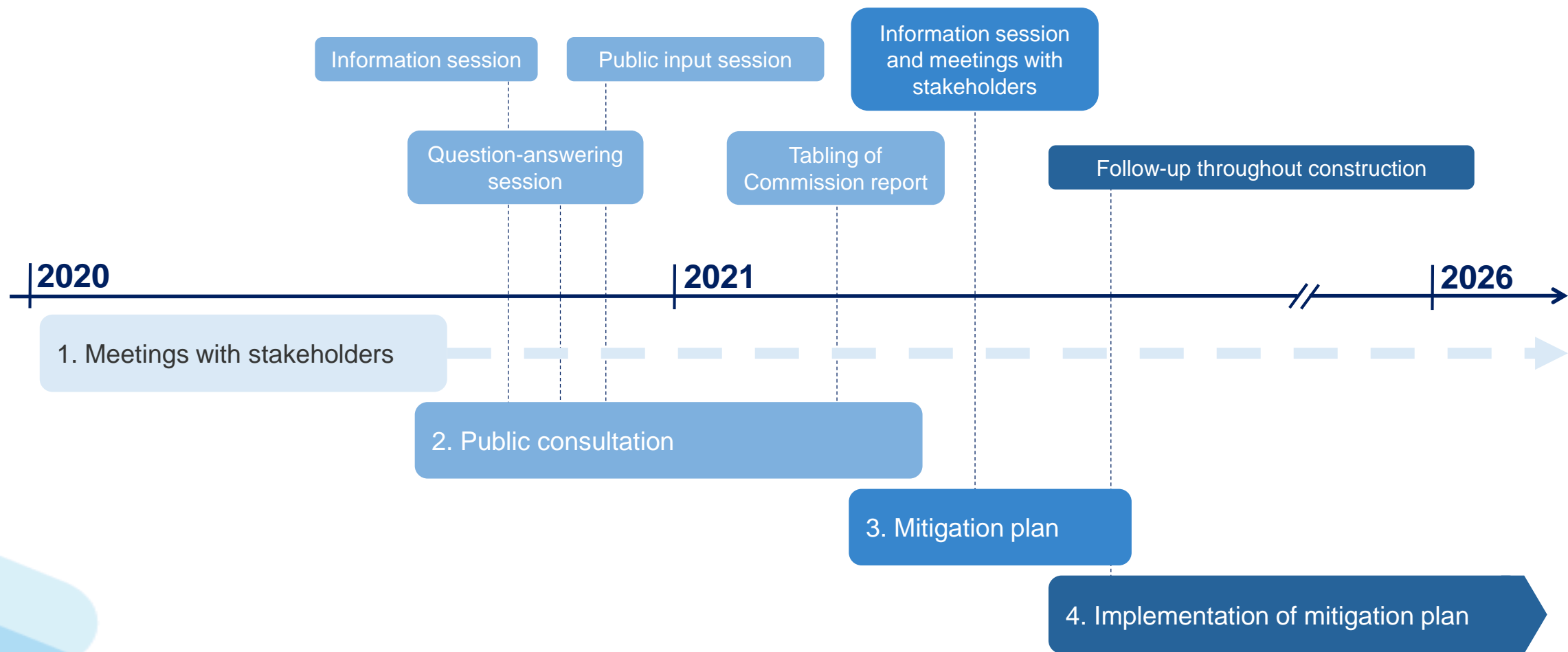
- Efficient communication plan to ensure regular updates on the Project and to create an open dialogue between the community and the STM
  - Newsletter
  - Door-to-door leaflet distribution at key stages
  - Media publications
  - Social media
  - Regular updating of the Project's Web page
- Information session on construction and mitigation measures
- Local resident committee during construction
- Liaison officer dedicated to communicating with local residents



# Community Engagement Process



# Community Engagement Process



# By-law Adoption Process

*As per Section 158.3 of the Act respecting public transit authorities (CQLR, chapter S-30.01)*

| Steps  | Target Dates  |
|--|---------------|
| Public consultation: information, question-answering and public input sessions | November 2020 |
| Tabling of Commission report   | Winter 2021   |
| By-law adopted by Montreal Agglomeration Council                               | Spring 2021   |
| By-law in effect   | Summer 2021   |
| Permits issued   | Summer 2021   |

# Next Steps of the Consultation Process

- If you wish to ask additional questions to be answered during the November 10 session
  - Fill the form on the NAC Project's web page – <https://www.stm.info/en/nac-consultation>
  - Contact us at 514 STM-INFO (514 786-4636)
  - Question period ends **November 4 at 11:59 p.m.**
  
- If you wish to present your opinion live during a virtual meeting on November 24
  - Register for a virtual appointment with the Commission – <https://www.stm.info/en/nac-consultation>
  - Registration closes **November 19 at 11:59 p.m.**
  
- If you wish to send your opinion to the Commission by other means before November 24
  - Standard online form with questions on the Project – <https://www.stm.info/en/nac-consultation>
  - By email – [Consultation@stm.info](mailto:Consultation@stm.info)
  - By phone – 514 STM-INFO (514 786-4636)

# To Stay Informed and in Touch

- NAC Project website: <https://www.stm.info/en/nac>
- NAC public consultation website: <https://www.stm.info/en/nac-consultation>
- Subscribe to the newsletter: <https://app.cyberimpact.com/clients/10713/subscribe-forms/D2A96B99-2D71-485B-8CCE-D1D60C6CFFBF>
- Customer Service: 514 STM-INFO (514 786-4636)



# Thank you!